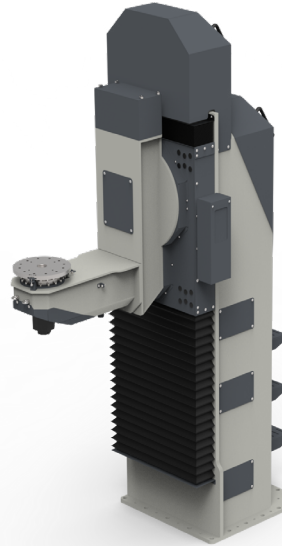


SPN-LZ 500

3 AXIS POSITIONER



Specifications

- Z stroke units are always servo motor driven and integrated with the other axis servo systems.
- The positioner is designed for rigidity, with high strength welded steel structure
- The positioner can be equipped with fixed or sliding tailstock.

Available options

- Ground bushing with sliding copper blocks
- Swivel unit, for air and signals
- Fixed tailstock
- Manual or motor driven sliding tailstock
- Home/safe position sensor
- Servo motor integration
- Special color of paint

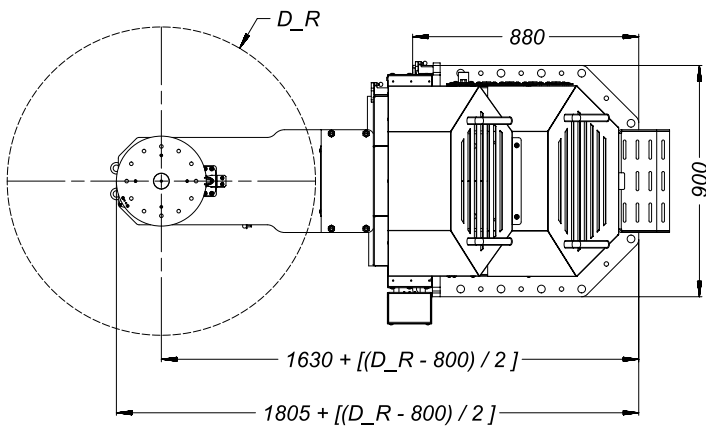
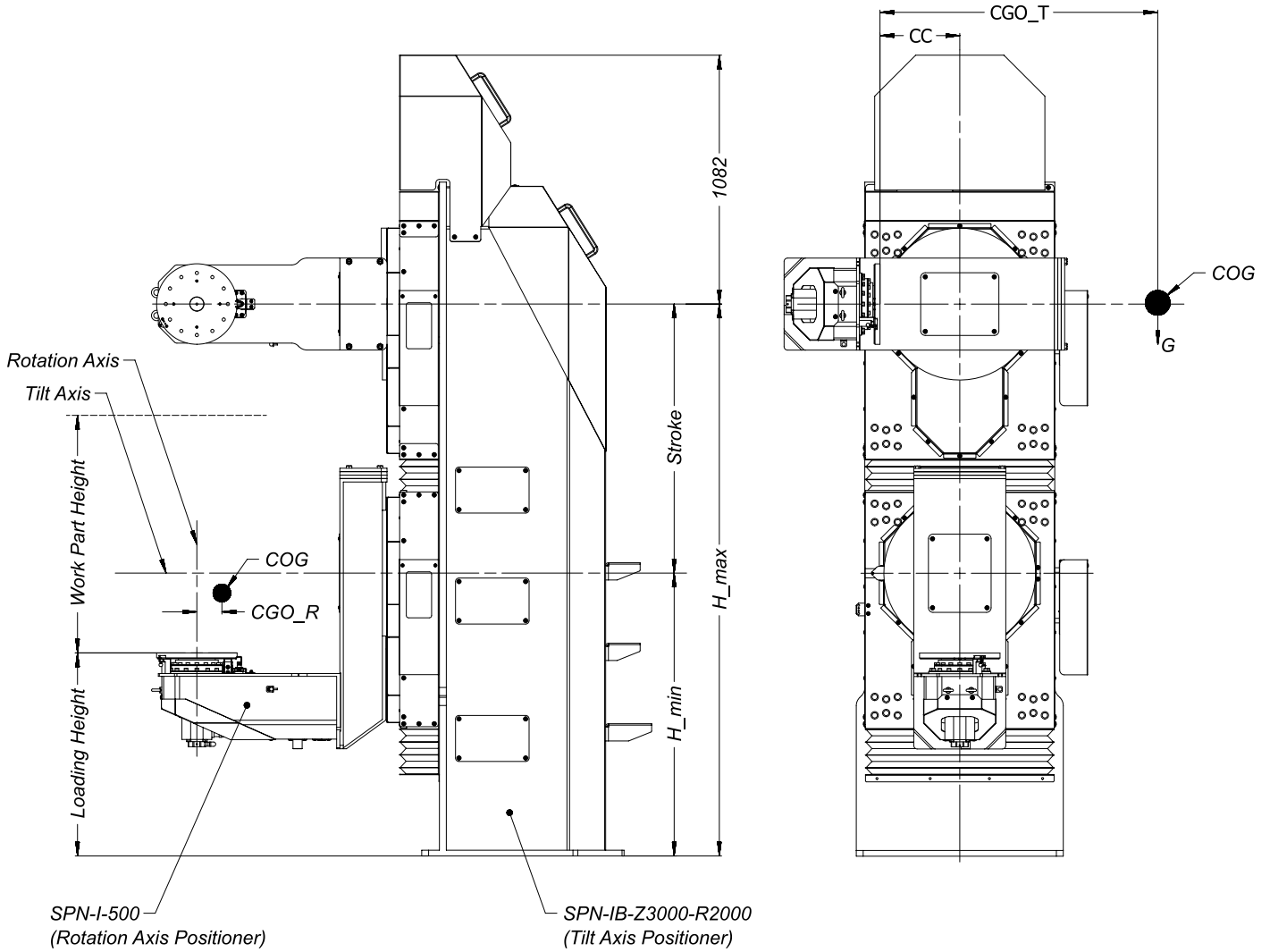
Technical Data

SPN-LZ-500

		SPN-I-500	
ROTATION AXIS	Max. Payload (m)	500	
		800	
	Fixture Diameter (D_R)		1.200
			1.600
			2.000
	Max. Tilting Moment	3.000	
	Max. Speed	<i>rpm</i>	20
<i>degree/s</i>		120	
Index Time	<i>s/180 degree</i>	2	
Allowable Inertia	<i>kgm²</i>	250	
		SPN-IB-Z3000-R2000	
TILT AXIS	Max. Payload (m)	2.000	
		1.500	
	Fixture Diameter (D_T = 2 x H_max)		2.000
			2.500
			3.000
	Minimum Height (H_min)	750	
	Max. Tilting Moment	18.000	
Max. Speed	<i>rpm</i>	7,5	
	<i>degree/s</i>	45	
Index Time	<i>s/180 degree</i>	4,5	
Allowable Inertia	<i>kgm²</i>	2.300	
		Z-3000	
Z AXIS	Max. Payload (m)	3.000	
	Max. Speed	<i>mm/s</i>	15

Technical data is subject to change without prior notice.

Please ask ADMEX in case center of gravity offset (CGO) graphs are needed for this model.



COG = Center of Gravity for Workpart + Fixture
CGO_R = Center of Gravity Radial Offset
CGO_T = Center of Gravity Tilt Offset
CC = Center to Center Distance
D_R = Rotation Axis Fixture Diameter

Available Fixture Diameter for SPN-I-500
D_R(mm) = 800-1200-1600-2000

Technical data is subject to change without prior notice.