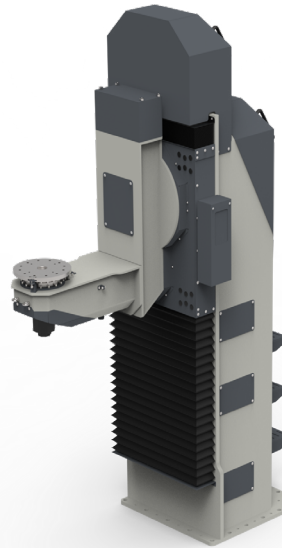


SPN-LZ 1000

3 AXIS POSITIONER



Specifications

- Z stroke units are always servo motor driven and integrated with the other axis servo systems.
- The positioner is designed for rigidity, with high strength welded steel structure
- The positioner can be equipped with fixed or sliding tailstock.

Available options

- Ground bushing with sliding copper blocks
- Swivel unit, for air and signals
- Fixed tailstock
- Manual or motor driven sliding tailstock
- Home/safe position sensor
- Servo motor integration
- Special color of paint

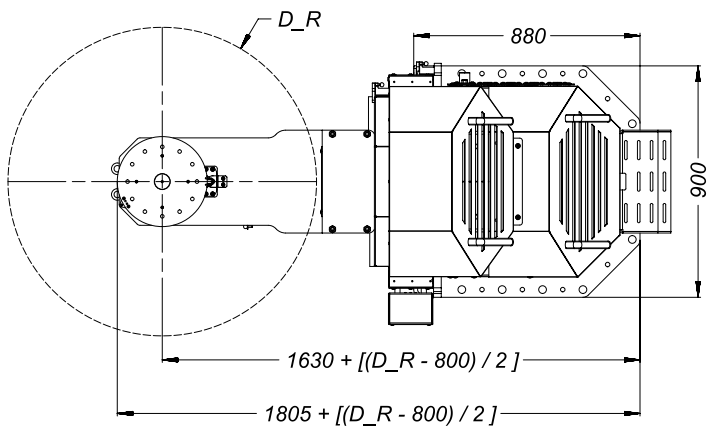
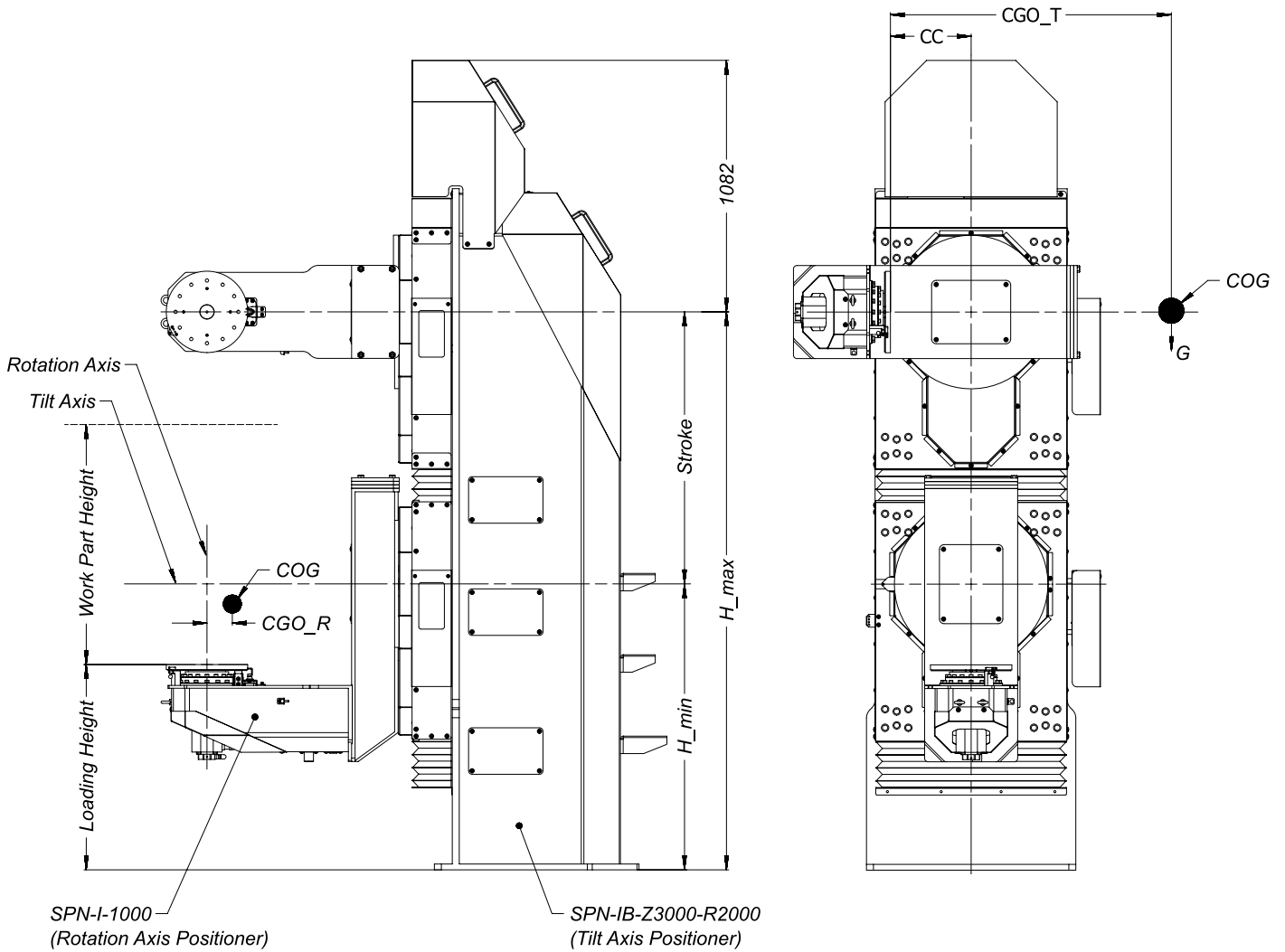
Technical Data

SPN-LZ-1000

		SPN-I-1000	
ROTATION AXIS	Max. Payload (m)	kg	1.000
	Fixture Diameter (D_R)	mm	800
			1.200
			1.600
	Max. Tilting Moment	Nm	2.000
	Max. Speed	rpm	3.000
	degree/s	15	
Index Time	s/180 degree	90	
Allowable Inertia	kgm ²	2,5	
		SPN-IB-Z3000-R2000	
TILT AXIS	Max. Payload (m)	kg	500
	Fixture Diameter (D_T = 2 x H_max)	mm	1.500
			2.000
			2.500
	Minimum Height (H_min)	mm	3.000
	Max. Tilting Moment	Nm	750
Max. Speed	rpm	18.000	
	degree/s	7,5	
Index Time	s/180 degree	45	
Allowable Inertia	kgm ²	4,5	
Z AXIS	Z-3000		
	Max. Payload (m)	kg	3.000
	Max. Speed	mm/s	15

Technical data is subject to change without prior notice.

Please ask ADMEX in case center of gravity offset (CGO) graphs are needed for this model.



COG = Center of Gravity for Workpart + Fixture
 CGO_R = Center of Gravity Radial Offset
 CGO_T = Center of Gravity Tilt Offset
 CC = Center to Center Distance
 D_R = Rotation Axis Fixture Diameter

Available Fixture Diameter for SPN-I-1000
 D_R(mm) = 800-1200-1600-2000

Technical data is subject to change without prior notice.